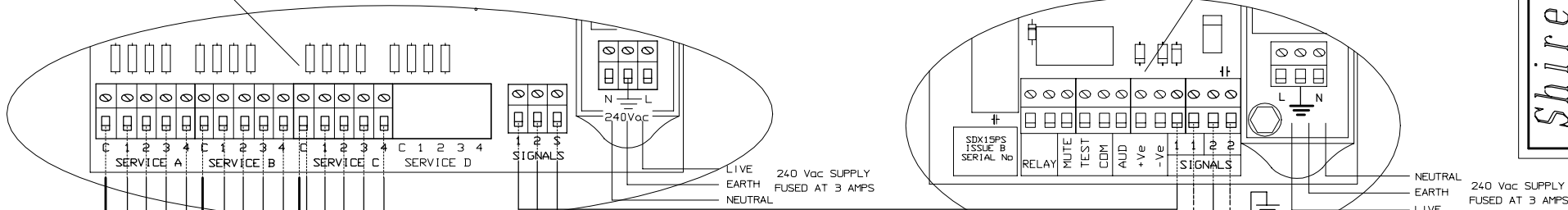
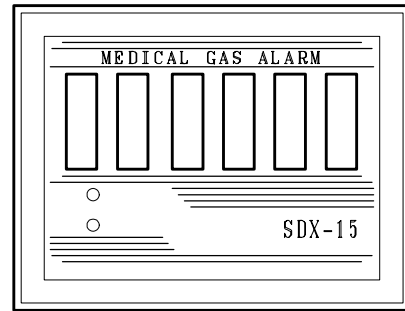


CENTRAL OR REPEATER ALARM PANELS



56K OHM RESISTORS
MUST BE FITTED TO
ANY UNUSED INPUTS

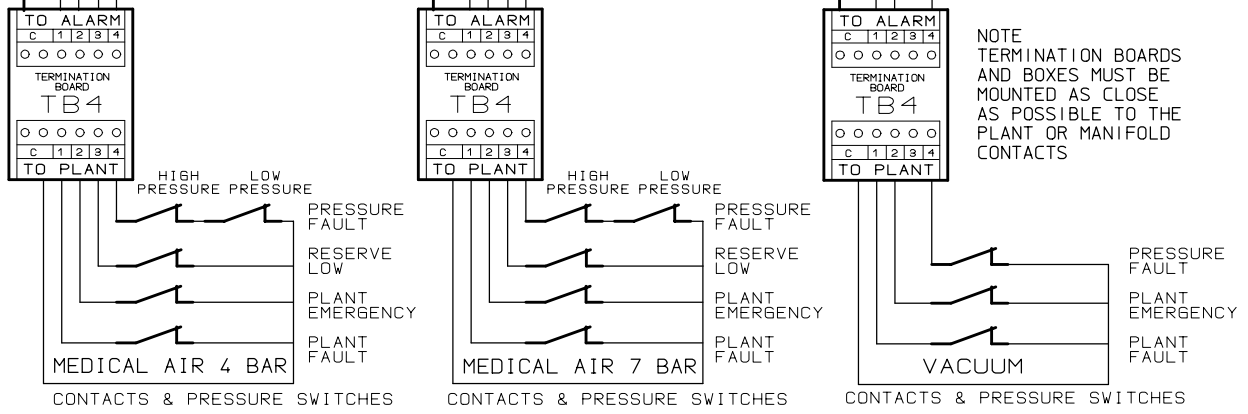
TO OTHER SDX-15
ALARMS AND EQUIPMENT
AS REQUIRED

NOTE

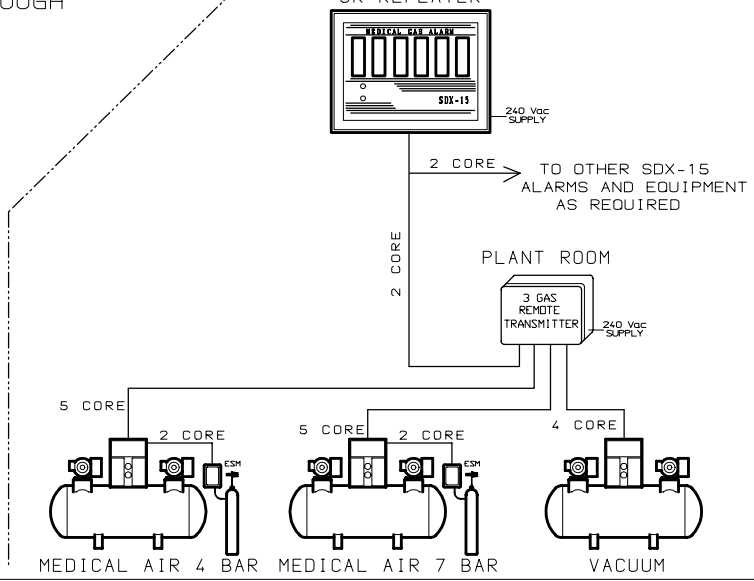
ALL SIGNAL CABLE TO BE A MINIMUM
OF 0.5 mm sq SCREENED / S.W.A /
OR IN METAL CONDUIT.

ALL JUNCTION BOXES MUST HAVE
THE SCREENS CONNECTED THROUGH
SCREENS MUST BE EARTHED

NOTE
TERMINATION BOARDS
AND BOXES MUST BE
MOUNTED AS CLOSE
AS POSSIBLE TO THE
PLANT OR MANIFOLD
CONTACTS



TYPICAL SDX-15 3 GAS CENTRAL OR REPEATER



Shire Controls Ltd

Title

CONNECTIONS TO A 3 GAS
SDX-15 REMOTE TRANSMITTER

Drawing No SDXRTX3

Date 09-10-2000 Issue 1